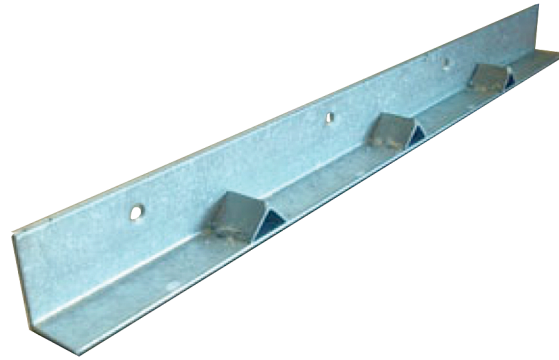


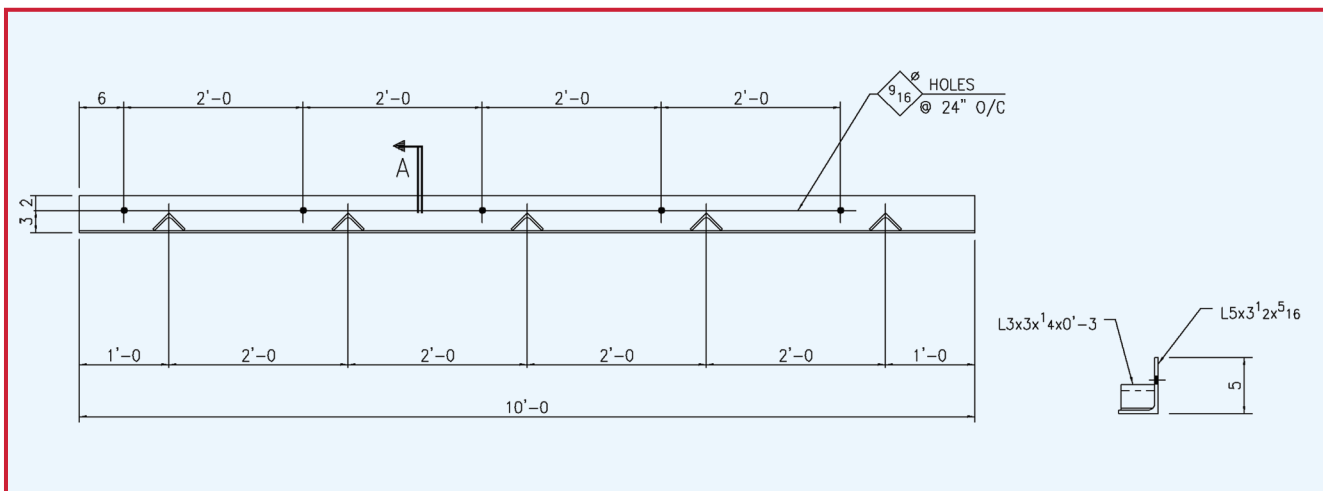
# EAVE LINTELS (ROOF/STEP LINTELS)



Per International Building Code  
**R703.7.2.2 Support by roof construction.**

The maximum slope of the roof construction without stops shall be 7:12. **Roof construction with slopes greater than 7:12 but not more than 12:12 shall have stops of a minimum 3 inch x 3 inch x 1/4 inch (76 mm x 76 mm x 6 mm) steel plate welded to the angle at 24 inches (610 mm) on center along the angle or as approved by the building official.**

- 5 x 3½" x 5/16" angle with 9/16" holes and 3 x 3 x 1/4 angle iron stops welded every 24 inches to give support to exterior masonry veneer on sloped roof construction. The use of the 3 x 3 x 1/4 angle instead of the 1/4 x 3 flat bar tabs allows for the lintel to be used on either the left or right side of the roof line
- Available in either galvanized or primed after fabrication
- Custom sizes available upon request



lintels@southatlanticllc.com  
www.southatlanticlintels.com

### Steel Specifications:

A36/A529GR50 test reports are available upon request.

### Coating Specifications:

Galvanized: ASTM A123/A123M-09  
Painted coating: Shop coat of redoxide utility primer NCP Coatings (N-8668-500)